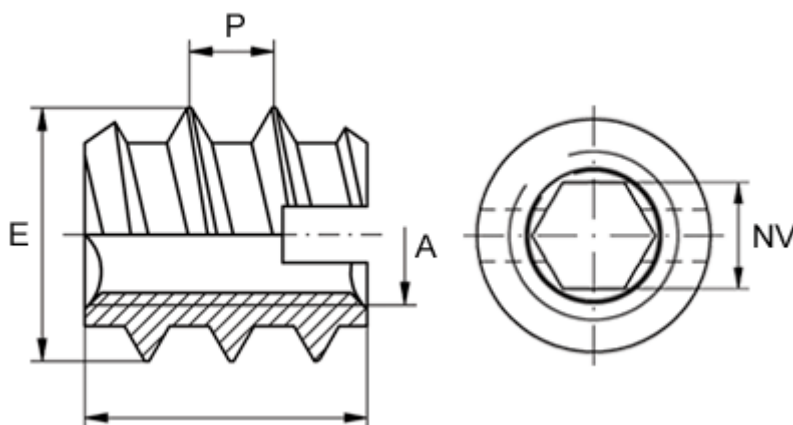


Data Sheet



Article number: 12309200100800
Description: KLEE-coil 309 200 100.800
M10 Brass

Measures



Female thread A	= M10
Internal hexagon NV +0.1	= 8.0
Length B	= 23
Male thread E	= 16.0
Min hole depth	= 26
Recommended bore diameter (plastic/hard wood)	= 12.6 to 12.8
Recommended bore diameter, soft wood (largest)	= 12.0
Thread pitch P	= 5.0